

CATCH CANINE TRAINERS ACADEMY

Professional Dog Trainer Program: Course Catalog

Serious Training Techniques for Serious Dog Lovers



2023

Professional Dog Trainer Program Course Catalog



2023 3rd Edition
Serious Training Techniques for Serious Dog Lovers

Contact:

24 Newark Pompton Turnpike, Suite 206
Little Falls, NJ 07424
Admissions Across the U.S.A
Phone: (877) 752-2824
Fax: (862) 239-6147
E-Mail: info@CATCHdogtrainers.com

www.CatchDogTrainers.com

Table of Contents

CATCH CANINE TRAINERS ACADEMY	4
Who We Are	4
What Makes CATCH Special?.....	5
Our Mission.....	6
MESSAGE FROM OUR SCHOOL DIRECTOR	7
GENERAL INFORMATION	8
Entrance Requirements	8
Class Sessions	8
Holidays	8
Attendance and Scheduling Policy	8
Leave of Absence	9
Conduct and Dress Code	10
Handicapped Facilities	10
Contact Information Policy and Replacement Materials	10
Completion Time	10
PROGRAM TUITION AND COSTS.....	11
Full Length Programs – 3 Levels	12
Pro Dog Trainer – Core Skills	12
Dog Training and Behavior – Basics Pro.....	12
CATCH Master Class.....	13
Mentor Optional Versions of Basics Pro or Master Class	14
Hands-on workshops: Training on our campus.....	14
Tuition Refund Policy	15
CURRICULUM	17
Course Program Title and Classification of Instructional Program (CIP) Code	17
Program Description & Desired Competencies.....	17
Competencies Prior to Enrollment	18
Instructional Hours and Credits	19
Instructional Staff.....	20
Outline of Subjects/Complete Curriculum & Instructional Strategies	20
ALUMNI BENEFITS.....	27
Evaluation.....	27
Student Resources	28
STATE LICENSURE AND APPROVALS.....	29
Student Records.....	29
NON-DISCRIMINATION, GRIEVANCE PROCEDURE AND FAMILY EDUCATIONAL RIGHTS AND PRIVACY ACT	30
Non-Discrimination Policy	30
Grievance Procedure.....	30
Family Educational Rights and Privacy Act.....	31
Student Rights and Responsibilities	31
CATALOG DISCLAIMER.....	32
THANK YOU	33

CATCH CANINE TRAINERS ACADEMY

Who We Are

CATCH Canine Trainers Academy (CATCH) is a Professional Dog Trainers school available nationally via multimedia and hands-on studies with Mentor Trainers to guide students to success. The CATCH headquarters are based in Little Falls, New Jersey, with students enrolled across the entire country. CATCH's Professional Dog Trainer course will give students the required expertise to: 1) be hired for jobs in national pet services franchises, local businesses, animal rescue shelters, veterinary centers, and dog day care facilities; 2) start or enhance their own dog business on a part-time or full-time basis; 3) deepen their understanding & relationships with all of the dogs in their life.

CATCH is led by passionate dog lovers who jump at every chance they get to work with dogs, talk about dogs, and train dogs. CATCH Founder, Mr. David Muriello, is a Cornell University graduate and Certified Professional Dog Trainer (CPDT-KA) and Service Dog Coach (SDC) who has trained thousands of dogs in group classes and private lessons. Mr. Muriello is formerly the Director of Dog Training and Director of Operations for New York City's largest and most comprehensive dog care business, Biscuits & Bath. He is well known for developing a successful school for dog trainers there, educating over 100 assistant trainers and leading many head trainers and business owners to their professional careers and various impressive certification credentials.



"An all-around great learning and life experience. Thank you CATCH for setting me up to succeed as a professional dog trainer!"

David has appeared as a dog expert on ABC-TV's *Rachael Ray Show* and CATCH has regularly appeared in *Dog Fancy Magazine*. David is a longtime Professional Member of the Association of Professional Dog Trainers (APDT) and has been certified by the Certification Council for Professional Dog Trainers since 2004. He has also been a presenter at the APDT conference, a national speaker for Petco and Petfinder's Adoption Options education program and a member of the APDT Education Advisory Group. David's passion for leading our school comes from the fact that he loves teaching people as much as he loves training dogs. He founded CATCH to share everything he has learned with aspiring trainers. After leading his dog business in New York City for 8 years, David created the hands- on/online hybrid course format for CATCH to make it possible for anyone in the country to be able to graduate as a Certified Dog Trainer. Our philosophy is to make the learning experience as hands-on and personal as possible for every student. Our program is designed so that our team of experienced trainers can work closely with students to answer their questions, challenge them, give them feedback, and share with them the wisdom that comes from years of experience training dogs.



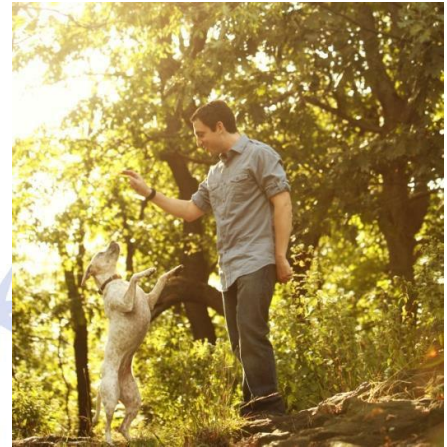
Jen and Dougie are a team, learning from each other.

What Makes CATCH Special?

"I am personally active in working with students to show them how our unique approach, hands-on studies, and 7 Guiding Principles can make their dog training career a success. I am here to share everything I know as a trainer who has owned and run one of the most successful dog training businesses in New York City for many years." –David Muriello, CPDT-KA, SDC, Director of CATCH Canine Trainers Academy

We are very enthusiastic about creating an incredible learning experience for you. There are so many things that make us different, we can hardly fit them all on one page. Compare us to others and you'll see. Then, give us a call, we can't wait to meet you and hear about your goals.

- **Hassle-Free, Instant Enrollment:** We don't charge you an application fee or box you into deadline windows. Just ask us for an online application. With our fast turnaround, you can start studying on the same day you are accepted.
- **We have a course for every dog lover,** from our Core Skills course to the Master Class program. Options include the convenience of self-paced study with a mentor in your town, or the intensive one-week workshops on one of our campuses. You can even create a package that has all of the above. Check out our options for every budget and choose what's best for you. Core Skills payment plans start at under \$140 a month.
- **When you call, you talk to real, experienced dog trainers.** Our Student Support is like no other. Challenge us, ask us anything. We'd love to talk to you about your questions and goals and we are here 9am - 7pm ET including Saturdays.
- **We offer a Personal Program Director and Student Support by phone, email, or video chat throughout your entire course.** You are always a name here, never a student ID number.
- **We offer you a Mentor Trainer local to you for hands-on guidance.** This can also be offered virtually if requested. Plus, you get live training demos on video. Learning dog training is so much easier when you have great mentors and video demos to follow along with. Exclusive to CATCH Students: Our School Director has created a full series of videos where he trains dogs he's never worked with before. He describes everything he's doing so you can absorb these techniques right into your skill set.
- **You will work with dogs in the very first phase of learning.** Our unique hands-on activities reflect our commitment to *learning by doing* as a scientifically proven methodology.
- **You won't need to pay for extra modules** to learn critical skills like how to earn money teaching private lessons. With our Master Class program, you will graduate with the skills for this and much more. Our certification goes far beyond just a "dog obedience" course. It is a complete study of canine behavior and training, including career preparation.
- **Complimentary Job and Business Consultation.** All courses prepare you to earn money with your skills. For Master Class graduates, you will get a consultation that is totally personal to your needs and includes one-on-one coaching by phone with one of our experienced dog trainers. Students must always gain positions based on their own merits, but we have extensive knowledge of the industry and connections all over the country which will be invaluable to you.



David and Hazel training in the park.

- **We provide you with your own Trainer's Library plus training equipment**, with Free Shipping right to your home.
- **Your studies cover the critical topics today's trainers need:** From "What's the right way to socialize my puppy?" to "Can my pet become my service dog?" to "Do you offer lessons by video chat?" – you'll have great answers.
- **Master Class graduates get complete lesson plans and training handouts for your own classes.** These plans are proven to create successful classes and are ready for you to use right away. You can add your own business name and logo to the handouts for a professional product to give your own clients.
- **You will be prepared to earn the national CPDT certification.** Ask us how our course sets you up to succeed for this additional impressive credential.
- **We are dedicated to training and helping shelter dogs.** This is a special part of our program that creates a huge win-win for dogs and students.
- **We know our stuff**, but we're never stuffy, know-it-alls. We are a fun, dedicated team of animal lovers inviting you to be part of our passionate, successful community. Join us!
- **State Licensure and Approval** – we are a Government-Approved School and Education Program. Getting Certified by a State Licensed Program will set you apart from your competition and give you the confidence you need to succeed.



Our Mission

Our mission is to provide aspiring dog trainers with a flexible, fun, and highly effective learning system. We will empower you with the skills to become a dog trainer who is ready to launch a successful career doing what you love every day while making a positive impact on the lives of dogs, their owners, and society.

To accomplish this mission, we maintain our focus on offering you:

- **Engaging study materials** presented in a logical, easy-to-follow sequence. CATCH videos included.
- **Step-by-step learning process** to build skills gradually, and advance them to higher levels as you move through each phase
- **Self-paced program** that is available anywhere in the U.S. and can fit into any existing schedule
- **Learning-by-doing** philosophy that empowers you to learn new skills hands-on. This increases your learning enjoyment and speed, based on the science of how the brain learns best.
- **Curriculum based on dog-friendly, reward-based training** and the philosophies of nationally respected councils endorsing modern, science-based, force-free training methods: the CCPDT & APDT
- **Friendly Student Support Team** offering you help with any questions you have throughout your course. Plus, you can have your own Program Director. All of this is always available via email and phone.
- **Professional experienced Mentor Trainers** to give you feedback that will continually take your skills to the next level
- **Opportunity to help shelter dogs** while you gain invaluable skills training them

MESSAGE FROM OUR SCHOOL DIRECTOR

I am thrilled to welcome you to an incredible learning experience with myself and the team at CATCH Canine Trainers Academy. For the better part of a decade before launching CATCH, I had an exciting and fulfilling career as one of the busiest, most successful dog trainers in New York City. My career path started with a very humble beginning, reading every training book I could find and volunteering to train dogs in shelters. From those first days of being a volunteer, to my work as a head trainer for a large dog care business, the constant has been how much fun it's been to learn and grow in this field. By studying and immersing myself in hands-on experiences, I have learned an incredible amount about everything from training dogs and teaching people to customer service and business skills. Today, I am offering the CATCH program to share the best of everything I have learned with you. My goal is for you to be inspired by your studies and totally immersed in hands-on interactions with dogs as you grow over the next year from a fascinated student to a skilled trainer.



Learning to become a professional dog trainer is not quick and easy, but if you are passionate about dogs (and I am guessing you are!), it is extremely fun and rewarding. You are going to be thrilled when you first feel yourself being able to read dog body language, to find the solution for how to get a distracted dog to focus on you, to unlatch the cage of a shelter dog and make her day by teaching her great manners in a fun and positive way! To share all of

this with dog owners who are excited to listen to you and learn from you is a huge reward. The CATCH Canine Trainers Academy program is all of this and so much more.

As I continually develop the curriculum for CATCH, I am fascinated by new developments in the world of behavior and training, and how fast this industry continues to grow. This is truly an amazing field to get into and you are going to have an incredible experience gaining all of the knowledge and skills that CATCH has to offer. It all starts with our passion for animals - the desire to connect with them and the amazing spirit that they share with us.

Simply put - some of us were not meant for desk jobs alone. Let's get out there and work with dogs. I hope you will CATCH and grab hold of your passion, your dream learning experience, and a fulfilling career path by joining our program. That is exactly what I want it to do for you.

Sincerely,
David Muriello, CPDT-KA, SDC

GENERAL INFORMATION

Entrance Requirements

1. All students must be at least eighteen (18) years of age on or before the first day of class. Special cases may be approved with the consent of a parent or guardian.
2. Students must possess a High School Diploma or a General Educational Development (G.E.D.) Diploma.
3. The minimum educational requirement for enrollment is the “Ability to Benefit”, which is defined as:
 - A. Ninth (9th) grade reading and math level as measured by the Tests of Adult Basic Education (TABE) or another test approved by the United States Department of Education (USDOE).
 - B. An interview with the admissions officer to review the TABE scores of the student and discuss any prerequisites needed for enrollment.

Class Sessions

CATCH is a modern, hybrid online/hands-on school with extensive practical learning. The class sessions are available to the student in their hometown via our renowned reading materials, videos, and hands-on training activities with Mentor Trainer guidance and personal feedback. CATCH offers rolling admissions and enrollment can get started on the same day you are accepted.

Holidays

The CATCH office may be closed on:

- New Year’s Eve and New Year’s Day
- Martin Luther King, Jr. Day
- Presidents’ Day
- Memorial Day
- Independence Day
- Labor Day
- Veterans’ Day
- Thanksgiving
- Christmas Eve and Christmas Day

Attendance and Scheduling Policy

CATCH Canine Trainers Academy strongly advocates regular attendance and study in order to facilitate proper training. Your performance in exams and evaluations will be a direct reflection of your consistent allegiance to the program requirements of attendance and regular study. Attendance will be recorded for all formal learning sessions, which may include: phone or video chat check-ins with your Program Director, training and field work sessions, mentor meetings, group classes, private lessons, or interactive discussions. Students are expected to attend all such learning sessions and be on-time (present at the scheduled start time). Students are also expected to be clear, consistent, and reliable in communication regarding scheduling of appointments, whether by email, text, phone or the like. Students failing to meet satisfactory scheduling and attendance requirements are subject to probation, suspension, and/or termination. Make-up work can be scheduled if necessary, and will always be based on availability. Make-up work is scheduled at the discretion of the Program Director or Mentor Trainer and is directly arranged between the student and the Program Director or Mentor Trainer. CATCH mandates the following guidelines for recording attendance and follow-up action for absentees.

Being on time shows professionalism and sets us all up for successful learning sessions. Being late to learning sessions will be considered as 'one tardy'; two tardies will be equivalent to one absence. No-shows are also considered an absence. After one absence a student will receive a warning. Probation will result for students having more than one absence. Students with more than two absences may be removed from the program. Making up missed sessions is a prerequisite to graduate, however there is no guarantee that makeup sessions will be available for multiple absences. Specifically in relation to internships, failure to arrive on time to more than one Mentor Trainer session can result in termination of the internship. For all of the above reasons, students are advised to always be on time.

Leave of Absence

A Leave of Absence (LOA) is a period of time during which a student may take a break from study, while maintaining the status of a student. Students will be granted a leave of absence upon request based on the following guidelines:

- Students must submit a request for LOA in writing to their Program Director and then receive approval in writing from the school before the LOA can begin.
- The request must have the date that the student will begin the leave and the expected date of return to study/classes.
- LOA requests must come before the LOA period (LOA periods cannot be granted retroactively).
- Work product and exams may not be submitted during the LOA period.

Unless otherwise specified by the school, the maximum number of LOA periods that may be granted to one student is 2. The maximum amount of LOA time for one student is dependent upon the course selected, as follows:

- Master Class Program: 4 months maximum total Leave of Absence time (If 2 LOA periods are taken, they can add up to no more than 4 months. E.g., they may be 2 months each.)
- Basics Pro Course: 3 months maximum Leave of Absence time (If 2 LOA periods are taken, they can add up to no more than 3 months. E.g., they may be 1.5 months each.)
- Core Skills or Concentrated Course: 2 months maximum Leave of Absence time (If 2 LOA periods are taken, they can add up to no more than 2 months. E.g., they may be 1 months each.)

A Leave of Absence will be honored within the student's Enrollment Agreement contract and will not extend beyond the contract. Should a leave request take the student beyond the contracted completion date, the student may be subject to re-entry under a new contract or an amended contract. If the student does not re-enter within the contracted schedule and does not arrange for a contract amendment then the student's contract will be terminated. When appropriate the student may be entitled to a refund in accordance with the school's refund policy, however refunds are not guaranteed outside of the contract end date. A Leave of Absence that extends beyond the original contract may be subject to additional tuition costs.

Students are responsible for understanding how their Leave of Absence may affect their progress and completion of their program. Each individual situation will be handled privately. The school will make every effort to help students meet their educational goals. It will be necessary to contact the Program Director before returning to class. Students should be prepared to make up lessons/classes lost prior to reentry into the program.

Conduct and Dress Code

We coordinate our institution according to the United States Department of Education guidelines. To uphold our standard we emphasize maintaining professional conduct throughout your enrollment. We champion and appreciate mutual respect and kindness. While we rarely see it, please be aware that rude, threatening, disruptive or disrespectful behavior can result in termination of a student's program without refund. This includes behavior with other students, mentors, CATCH staff or any member of our extended community in person, over the phone, text, or through any form of online communication such as email or social media. Similarly, any type of mistreatment of an animal can result in termination of a student's program. If a Program Director or Mentor Trainer feel that a student's behavior is disruptive or unprofessional, or there is mistreatment of animals in any form, this can result in a warning, or immediate suspension or termination of that student's program, or removal of support and certification in the case of a graduate. Further, during all phases of coursework, including internships, students must maintain a violence-free and drug-free environment (and smoke-free environment in non-smoking spaces).

Professional, neat attire is both ideal and required during shadowing, skills evaluations, shelter work, and public appearances. Students are representing themselves and CATCH Canine Trainers Academy so it is a win for both of us when you look professional. Students provided with the CATCH trainer's shirt should always wear this to classes, lessons, shelter work, and evaluation sessions. For safety and professionalism, other elements of our dress code include close-toed shoes, pants or long shorts, and no ripped clothing. You will find that most pro training facilities and shelters have the same dress policies. Failure to follow the provided internship guidelines such as being on-time and properly attired can result in internship termination. Please follow all safety precaution measures on site and carry along all necessary equipment to be productive during your training sessions. Thank you for following these guidelines, they will contribute to your success!

Handicapped Facilities

Please refer to the competencies required for physical activity during coursework in the Curriculum section. If you have a special need and have questions about how that may relate to the coursework and requirements listed, we want to be as helpful as possible. Please contact us with your questions.

Contact Information Policy and Replacement Materials

Please take advantage of our renowned Student Support and stay in touch. As a student, it is your responsibility to always keep your current working phone number and your current working email address on file with CATCH. As part of your support, we will make regular attempts to contact you via the phone number and email you have on file. If our phone calls and emails do not get a response back from you for any period over a month, we will then stop attempting contact for support and wait to hear from you.

As a student, it is your responsibility to keep your current shipping address on file. Please be sure to tell us right away if your address changes. We are not responsible for forwarding shipped materials if your address changes without us knowing. We can replace materials for you if needed, but please be aware there will be a charge for both the materials and shipping of any replacement items, under any circumstances.

Completion Time

The expected completion time for the CATCH Canine Trainers Academy's Master Class Program is 8 – 16 months, but the course can be completed sooner or later, depending on your personal pace. The Basics

Pro Course is expected to take 5 – 10 months. The Core Skills course is expected to take 4 – 8 months. Maximum time given to complete each course is as follows:

- Master Class: must complete within 18 months from start date
 - Basics Pro: must complete within 1 year from start date
 - Core Skills: must complete within 10 months from start date
- *Does not include Leave of Absence time, if granted

All of our courses offer you great flexibility to fit your study time into your existing lifestyle.

Go at the pace that works best for you. We also offer one-week intensive workshops on our campuses around the country. Ask us if you're interested in combining a workshop with your course.

PROGRAM TUITION AND COSTS

We have a program for every goal and budget, including flexible payment plans. From Core Skills to Master Class certification, choose the ideal course for you!

- You will receive a personalized diploma for every course you graduate from.
- Prices for every course include our renowned print and video study materials, free shipping, unlimited basic Student Support (customer service) by phone and email, and access to our invaluable Student Center online.
- Most courses also include a local Mentor Trainer for hands-on training, plus a Personal Program Director who is an experienced dog trainer to support you throughout your studies.
- **Our hassle-free enrollment process means you can apply quickly online and begin studying the same day you are accepted.**



"The program was incredibly professionally run. I learned more than I ever dreamed I could/would."

Financing Options

In addition to our flexible payment plans, Financial Assistance options are available to qualified applicants. You can choose a custom payment plan or student loan to fit your needs.



Student Loans

We offer student lending that allows you to spread out your payments into small, affordable amounts so you can focus on learning and getting a high return-on-investment from your education.

- Your loan application is completely online (and mobile friendly) and can be completed in as little as 5 minutes with no impact to credit.
- Instant decisions are given 95% of the time, with the ability to accept and e-sign your documents in just a few clicks.
- We strive for a high rate of loan approvals, including financing for students with no credit and the ability to add a co-borrower to your application.
- You can expect flexible terms and fixed interest rates for the life of your loan.
- You can prepay, in part or in whole, at any time without penalty.

Call our friendly Student Support team to learn more. We are always here to help.

Call 877.752.2824 (877.75.CATCH)

Note Regarding Payment Plans:

On the agreed upon dates for payments per the Student Agreement, students are responsible for having the available funds for the amount due that is shown in their Student Agreement. CATCH does not reimburse overdraft fees or any bank fees of any kind.

Full Length Programs – 3 Levels

Pro Dog Trainer – Core Skills

Gain skills for training, behavior, and all dog-related career fields

Highlights:

- Earn a Diploma in Dog Training and Behavior from our State-Licensed Career School
- Our most flexible pay plan ever – under \$140 a month
- All the core concepts in behavior and training covered across 7 fascinating phases of self-study
- Renowned videos and books you get to keep
- Basic Student Support throughout your course (includes customer service, but does not include access to dog trainers for questions on study topics – that feature comes with the next level courses)



Learn to train, read body language, and handle dogs of all shapes and sizes.

Core Skills earns you an impressive diploma and is designed to help you launch any career with dogs.

Core Skills Tuition Paid in Full: \$1,212

In-House Payment plan: \$99 down, \$138/month for 12-month term (No credit check, 100% approval)

Dog Training and Behavior – Basics Pro

Take your abilities to the next level with the condensed version of our Master Class program, including a local Mentor Trainer for hands-on shadowing and skills evaluation, plus a Personal Program Director to support you throughout your course.

Highlights:

- Earn a Diploma in Dog Training and Behavior from our State-Licensed Career School
- Get paired with your own local Mentor Trainer for invaluable hands-on work with feedback
- You'll also be assigned a Personal Program Director who is an experienced dog trainer that will support you throughout your course
- All the core concepts in behavior and training are covered across 10 fascinating phases, including how to launch the career or business of your choice
- Renowned videos and books you get to keep



Run, don't walk – to join one of the few industries that is booming right now – Pet Services. We are the experts at getting you started as a professional.

Basics Pro earns you an impressive diploma and gives you the skills to be a professional in the booming dog services industry.

Basics Pro Tuition Paid in Full: \$2,793

In-House Payment plan: \$199 down, \$272/month for 12-month term (No credit check, 100% approval)

CATCH Master Class

Our Complete Certification Program | Your premier path to becoming a professional with a title

The Master Class is our most comprehensive knowledge and skill-building program covering high-level training, behavior, and total career preparation. Due to the extensive skills evaluations in this course, graduates earn a Certified Dog Trainer title.

Highlights:

- Graduate with a Certified Dog Trainer title (CCDT)
- Learn basic and advanced training skills, plus advanced behavior problem solving
- Get paired with your own local Mentor Trainer for *multiple* feedback sessions and invaluable hands-on work
- You'll also be assigned a Personal Program Director who is an experienced dog trainer that will support you throughout your course
- Career and business building – all the core concepts in behavior and training are covered across 10 fascinating phases, including how to launch the career or business of your choice
- Get your own set of customizable lesson plans when you graduate



"I feel confident about my knowledge and skills. Within weeks of graduation I was offered a management position at a local doggie day care. I chose to accept another position on a shelter behavioral team doing behavioral assessments and training the shelter dogs. And... I'm looking forward to welcoming clients this Fall season!"

In addition to an impressive diploma, Master Class earns you a Certified Dog Trainer title and gives you the most comprehensive skill set for a professional dog trainer.

Master Class Tuition Paid in Full: \$5,025

Extended Loan Financing: \$200 down, \$231-\$249/month for 24-month term (Credit approval required)

In-House Payment plan: \$990 down, \$449/month for 12-month term (No credit check, 100% approval)

Financial Assistance options for all courses are available.

You can choose a custom payment plan or student loan to fit your needs. Your loan application is online (and mobile friendly) and can be completed in as little as 5 minutes, with no impact to credit, and instant decisions given 95% of the time. Call our friendly Student Support team to learn more. We are always here to help.

Call 877.752.2824 (877.75.CATCH)

Achieve Your Goals with Core Skills, Basics Pro, or the Master Class

Do you want to:

- Start or enhance your own Dog Services Business?
- Get hired as a Pro Trainer?
- Prep for training service dogs or working dogs?
- Help shelter dogs by making them more adoptable?
- Dog walkers, pet sitters, daycare managers – take your income to the next level?
- Get recognized as an expert with impressive knowledge & skills that everyone can see?



As a graduate of the Core Skills or Basics Pro courses, you can accomplish all of the above. For the highest-level certification program that earns you a CCDT title, see the Master Class above. We also offer one-week intensive workshops on our campus. Ask if you're interested in combining a workshop with your course for combo discounts.

Mentor Optional Versions of Basics Pro or Master Class

Covers everything our Basics Pro or Master Class covers, except you do not commit to us pairing you with a Mentor Trainer. You have the option to upgrade to a Mentor Trainer pairing at any time.

If you choose the Master Class Mentor Optional course, you will graduate as Certified in Dog Training Knowledge (CDTK).



Basics Pro – Mentor Optional Tuition Paid in Full: \$2,170

In-House Payment plan: \$165 down, \$221/month for 12-month term (No credit check, 100% approval)

Master Class – Mentor Optional Tuition Paid in Full: \$3,648

Extended Loan Financing: \$200 down, \$169-\$180/month for 24-month term (Credit approval required)

In-House Payment Plan: \$590 down, \$325/month for 12-month term (No credit check, 100% approval)

Hands-on workshops: Training on our campus

In addition to self-paced courses with a mentor local to you, CATCH also offers one-week intensive workshops on our campuses. These workshops can be completed as a standalone achievement or as part of a package in combination with any full-length CATCH course.

- Intensive 1-week, in-person workshops, training dogs every day
- On-site at a beautiful, modern training facility and shelter
- Earn a certificate to showcase your skills
- Totally immersive hands-on training where we provide many different dogs for you to practice with
- You will be coached and evaluated by expert trainers to build your skills in a fun, supportive setting
- Workshops are limited to 12 total slots for a personalized, intimate learning experience
- If you are interested in more details on workshops, ask us for a separate catalog that lists available options, policies, and upcoming dates.

Tuition: \$1,990 | Payment plans available for advance enrollment

Call our Student Support Team to learn more about tuition and details for upcoming Hands-On Workshops. You can enroll in workshops as a standalone course or in combination with one of our full-length programs for a package deal and an incredible overall learning experience.

studentsupport@catchdogtrainers.com | 877.752.2824
(877.75.CATCH)



"The on-campus workshop exceeded my expectations. The instructors were fantastic. I don't believe you can get an education like this anywhere else. Working with the shelter dogs was fantastic. We were so fortunate to have such a great environment to work in. I miss everyone, the people and the dogs!"

Tuition Refund Policy

The Student is responsible for 100% percent of the total tuition (or 100% of the down payment for Payment Plans) payable to Canine Trainers Academy LLC before study materials will be received. Maximum time given to complete your program is shown in the Completion Time section above. Students will need to meet all financial responsibilities and be up to date on payments in order for studies to proceed and before a certificate of completion will be issued.

There is a non-refundable Registration/Administration fee for all courses. This fee is not part of the tuition. The tuition will cover the entire program. All tuition monies paid by the Student, with the exception of the Registration/Administration fee and fee for any Study Guide/Books/Tools shipped, will be refunded if the Student cancels this contract within three business days from the date of signing. This refund, less the fees for Registration/Administration and Study Guide/Books/Tools, is applicable even if instruction has begun. At any time that a refund is granted, the student will be given the choice to have the refund: 1) go back on their credit card, minus the deduction of a 3% credit card processing fee; or 2) via check, minus the cost to ship with tracking by mail (approximately \$7). After a student reaches the end date listed on their student agreement, no refunds are eligible to be issued. Due to very limited spots available, workshops have a separate refund policy – they are non-refundable. Refer to the workshop catalog for specific details or contact Student Support, we are always happy to answer all of your questions.

Breakdown of Fees for Master Class Program

Tuition	Registration/ Administration	Study Guide/ Books/Tools	Exams	TOTAL*
\$3,925 - \$5,278	\$450	\$600	\$50	\$5,025 - \$6,378

Breakdown of Fees for Basics Pro Program

Tuition	Registration/ Administration	Study Guide/ Books/Tools	Exams	TOTAL*
\$2,143 - \$2,813	\$300	\$300	\$50	\$2,793 - \$3,463

Breakdown of Fees for Core Skills Program

Tuition	Registration/ Administration	Study Guide/ Books/Tools	Exams	TOTAL*
\$747 - \$1,290	\$200	\$225	\$40	\$1,212 - \$1,755

* Payment plans are available for all courses.

The total is dependent upon whether or not a payment plan is selected.

A student wishing to withdraw must submit written notification to the school director within five business days of the date of withdrawal. This document must contain the student's name, course, and date of withdrawal. All financial obligations on the part of the school and the student will be calculated using the official withdrawal date. It is the student's responsibility to withdraw officially from the school. Failure to withdraw formally may result in failing grades, breach of contract, dismissal, and additional financial obligations.

CATCH Canine Trainers Academy's refund policy for all programs except Concentrated Courses is based on full-time attendance in courses/programs exceeding 300 hours, but not exceeding 1200 hours (N.J.A.C. 12:41-2.4k(2)). The school will retain the registration/administration fee and the monies paid for the Study Guide (S.G.), books, tools and equipment shipped. The school shall adhere to the following refund policy in the event of notification by the student of withdrawal from the school or termination by the school prior to completion of the course or program:

Time of Withdrawal	Student's Responsibility
Within three business days of signing this contract	0% of total tuition plus fee for Registration/Admin. & fee for S.G./Books/Tools
During the first week	10% of total tuition plus fee for Registration/Admin. & fee for S.G./Books/Tools
Weeks two and three	20% of total tuition plus fee for Registration/Admin. & fee for S.G./Books/Tools
After three weeks & prior to 25%	45% of total tuition plus fee for Registration/Admin. & fee for S.G./Books/Tools
After 25% of program and before 50%	70% of total tuition plus fee for Registration/Admin. & fee for S.G./Books/Tools
After 50% of program is completed	100% of total tuition plus fee for Registration/Admin. & fee for S.G./Books/Tools

For Concentrated Courses only:

CATCH Canine Trainers Academy's refund policy for concentrated courses is based on full-time attendance in courses/programs of 300 hours or less (N.J.A.C. 12:41-2.4k(2)). The school will retain the registration/administration fee and the monies paid for the Study Guide (S.G.), books, tools and equipment shipped. In the event of withdrawal from the school or termination by the school prior to completion of the course or program, the school shall retain a pro-rata portion of the tuition calculated on a weekly basis as follows:

Time of Withdrawal	Student's Responsibility
Within three business days of signing this contract	0% of total tuition plus fee for Registration/Admin. & fee for S.G./Books/Tools
During the first week	10% of total tuition plus fee for Registration/Admin. & fee for S.G./Books/Tools
During the second week	20% of total tuition plus fee for Registration/Admin. & fee for S.G./Books/Tools
During the third week	30% of total tuition plus fee for Registration/Admin. & fee for S.G./Books/Tools
According to the pattern above, each successive week the student's responsibility increases by 10% up to 100% during the 10th week.	40% of total tuition plus fee for Registration/Admin. & fee for S.G./Books/Tools (during the 4th week); and 100% of total tuition plus fee for Registration/Admin. & fee for S.G./Books/Tools (during the 10th week)

Tuition Bridge Fee for Combining Concentrated Courses Towards a Master Class Certification: Student understands and agrees that he/she has the option to pay a Tuition Bridge fee of \$99 at any time that he/she would like to combine Concentrated Courses towards a Master Class Certification.

For All Courses and Programs:

The student agrees to maintain regular adherence to the program guidelines and to abide by the rules and regulations of the school. The student understands that regular attendance and study is the obligation of the student and that the school's policy regarding absence and make-up as stated in this school catalog will apply. The student agrees to acknowledge CATCH Canine Trainers Academy's copyright and other proprietary rights where they exist in all content and material provided for the course. The student agrees never to reproduce, distribute, or send any of the CATCH educational materials to any other person via e-mail, and never to post or share them on the Internet in any form of social media or content reproduction. The student agrees not to allow anyone else to share, post, or reproduce any of the above mentioned educational materials. The student agrees never to share any exam content, including exam questions or answers, with any other student under any circumstances. Violation of school rules and regulations may subject the student to dismissal.

For Shipping of Sized Items Such as Equipment or Shirts:

During the course, the Student may be given an option to choose a size for any equipment or shirt they will receive as part of their program. CATCH will notify the student of what options are available at that time. Once the student has made a selection, CATCH will ship the item(s). If the Student decides after receiving the item(s), that he or she would like a different size, he or she may order a new one, but only at his/her expense including the shipping. CATCH is not a retailer so we are unable to accept return items or re-ship items for free. For this reason, please take care in choosing sizes.

CURRICULUM

Course Program Title and Classification of Instructional Program (CIP) Code

Vocational Dog Training Program (CIP Code: 01.0505).

Program Description & Desired Competencies

The full-length CATCH Curriculum provides you, the enrolled student, with a complete education to become a dog trainer and launch a successful dog training career. It begins with core foundation knowledge about puppy behavior and progresses through every key topic you'll need, from learning dog body language and updated training techniques to behavior problem solving and business building. The overall CATCH program is based on flexibility, in-depth hands-on learning, feedback sessions with your Program Director and Mentor Trainer, all with our philosophy of positive, reward-based training. The curriculum is primarily founded on three cardinal imperatives:

1. The Experience of Founder/Director, David Muriello, CPDT-KA, SDC and his colleagues
2. The Certification Council for Professional Dog Trainers' recommended study content to prepare dog trainers for the national CPDT exams
3. The Association of Professional Dog Trainers Education Committee's top recommendations of resources and study content for aspiring dog training and behavior professionals

The CATCH Curriculum is broken down into 10 sections of study, which we call phases. At the end of each phase, you will take a Phase Exam to test your knowledge and skill on everything studied in that phase. When you pass each Phase Exam, you are ready to move onto the next phase.

When you have completed all 10 phases with passing grades, you will be ready for your final exam. The Final Exam will ask you to demonstrate your knowledge from all 10 sections of the curriculum. When you pass the Final Exam, you will receive warm congratulations from the team at CATCH as you have now officially earned your chosen certificate in Dog Training & Behavior Studies. You are ready to put your skills to work and launch your dream career or expand your dog business.



Competencies Prior to Enrollment

All enrolled students must be over 18 years. Instruction for the program will be provided in English only at this time; hence, all enrolled students must have a sound working knowledge of written and spoken English. All enrolled students must be High School Graduates or equivalent as described in Entrance Requirements above. Students must: 1) be physically competent to perform dog trainer's actions, and 2) have access and ability to use a computer. Both requirements are outlined below.

Action	Rarely (0%)	Sometimes (1-32%)	Often (33-66%)	Constant (67-100%)
Physical Conditions				
Sitting		√		
Standing		√		
Walking		√		
Bend/Stoop			√	
Hand Grasp			√	
Hand Manipulation			√	
Climb		√		
Crawl	√			
Squat		√		
Reach above Shoulder	√			
Reach below Shoulder			√	
Lifting: Up to 24lb		√		
Carrying: 1-10lb		√		
Push/Pull			√	
Balance			√	
Twist/Turn			√	
Crouch		√		
Kneel		√		
Restrain		√		
Miscellaneous				
Chemicals and disinfectants		√		
Inclement Weather		√		
Animal Hair			√	
Animal odors		√		
Noise such as canine vocalizations		√		

Use of Hands, Legs, and Feet

- Student must be able to:
 - Use both hands for repetitive action such as tightly gripping and guiding a leash.
 - Grasp and hold a leash, demonstrating the ability to control dogs of any size that they wish to work with during the course.
 - Move feet forwards and backwards during training exercises.
 - Maintain balance while working a dog and simultaneously watching the dog's behavioral responses.
- Fine motor skills in both hands are required for repetitive actions such as attaching and detaching collars and leashes, as well as delivering food rewards to the dogs during training.
- Students must have good hand-eye coordination.

Balance and Range of Motion

- Student must have:
 - Good range of motion in joints; particularly in the back, wrists, elbows, and knees.
 - Ability to balance when interacting with dogs; for example, to be able to stay on their feet while a strong dog may be pulling on leash, or when a dog jumps up on them.
 - Ability to bend, kneel, or sit on the floor, and return to standing from any of those positions.

Visual Requirements and Hearing Requirements

- Student must be able to:
 - Visually observe people and dogs up to 100 feet away.
 - See the body language of the dog in front of him/her.
 - Hear and recognize dog vocalizations both soft and loud.
 - Hear normal speech within regular speaking range as well as loud speech from up to 100 feet away and in environments such as an outdoor training space or busy indoor classroom.

Learning Environments and Needs

- Students are required to have access to a computer that is connected to the internet.
- The computer with internet connection must be capable of performing standard modern internet functions such as playing videos or enabling the student to answer interactive questions in the online Student Center.
- The student must be able to use basic computer functionality for communication and study, such as email, attaching documents, internet browsing, and logging on and off of websites.
- Students are required to maintain communication with their Program Director via phone and email as well as have the ability to transport to meetings with their Mentor Trainer, if they have elected a course that includes a local mentor.
- Students may be required to spend time in a training facility, animal shelter, or similar environments where there are great opportunities to observe and/or interact with dogs.
- Students may be required to walk on uneven surfaces such as grassy play areas for dogs, and curbs or stairs such as in or around a training facility or animal shelter.

The application process includes time spent on the phone with our Student Support Team, any email or text exchanges, as well as the online application forms. Communication style and ability are considered.

Instructional Hours and Credits

The entire Master Class course will span over 570 clock hours. One clock hour is defined as a 60-minute span of time in which 50 minutes is devoted to class instruction with the remaining portion being designated as a break.

The ratio of conversion from clock hours to credit units is as follows:

10 clock hours = 1 semester credit unit of online lecture or equivalent. 20 clock hours = 1 semester credit unit of hands-on training.

Instructional Staff

Mr. David Muriello, CPDT-KA, SDC, President and Director of CATCH Canine Trainers Academy, is responsible for curriculum design, course material authorship, selecting titles for reading, test set-up, hands-on training set-up, and mentor evaluation set-up. An alumnus of Cornell University, Ithaca, NY,



Mr. Muriello is a Certified Professional Dog Trainer, a long-time member of the APDT (Association of Professional Dog Trainers), and an accomplished management, operations, and strategy professional. Mr. Muriello has appeared on national television (ABC-TV) as an expert to discuss dogs on the *Rachael Ray Show* and has appeared on the *Discovery Channel* and in *Dog Fancy* magazine. He has been a national speaker for the *Petco Foundation* and *Petfinder* Adoption Options programs and also a former member of the APDT Education Advisory Group. In addition to personally training thousands of dogs, he has authored curriculums and self-published books for puppy kindergarten, as well as basic and advanced courses that have been read and used by thousands of clients in the New York Metro area. Mr. Muriello has a deep knowledge of his field based on a wide range of dog training and behavior experiences, leading and participating in workshops all over the country and beyond – from off-leash reliability and agility training to studying sled dogs' pack behavior and the ecology of Mexico City's dump dogs.

Outline of Subjects/Complete Curriculum & Instructional Strategies

Whether you choose the Master Class Program or the Core Skills course – our phases are designed to build invaluable skills in dog training and behavior. If you want to be at the top of your field in understanding, caring for, and training dogs – our curriculum is for you. **If you are involved in dog services, shelter work, rescue work, dog day care, veterinary, boarding, walking, or grooming – our courses are for you. Our goal is to create the best personnel in the dog world. Join us!**

An outline of our core curriculum, the Master Class, follows:

Phase 1 – Your Core Foundation for Becoming A Dog Behavior Expert

Overview: Core knowledge about training history, dog social development, raising puppies, and the amazing array of modern breeds will be key focuses in this phase. You will also learn the differences between service dogs, therapy dogs, and emotional support dogs. Basic health and socialization routines for all pet dogs will be covered. Understanding the development periods of puppies will be especially valuable. This will give you critical knowledge of what causes behavior problems, and the ability to prevent them when you advise new puppy owners with expert knowledge.

Duration and Credits: 2-4 Weeks, 2.00 Units

Highlights:

- History of dog training and training philosophies
- Dog social development
- Critical socialization periods during puppyhood
- Effective socialization
- Bite inhibition
- Identifying and understanding our amazing array of dog breeds
- The history of how dogs came from wolves
- Genetics of behavior
- Raising a great puppy
- Basic health routines and disease prevention
- Important legal distinctions for service dog training
- Hands-On Activities such as puppy behavior field studies and breed identification challenges

Phase 2 – Understanding Dog Behavior, Body Language, and Vocalizations

Overview: As you study the fascinating aspects of dog behavior in this phase, pay special attention to the images that accompany the readings and videos. Your brain has an incredible capacity to absorb this visual information and after some time studying, you will begin to notice that when you are with dogs, you are suddenly able to see details in their behavior that you never perceived before. This information will give you a deeper understanding of dogs' communication and internal states (emotions). Your ability to “read dogs” will become an essential and powerful skill that will make you more successful in all situations with dogs.

Duration and Credits: 3-5 Weeks, 3.00 Units

Highlights:

- How to see the details in dog body language
- Head, body, tail, movement, and more
- Human body language from a dog's point of view
- Dog vocalizations (barking and more)
- Greeting behavior
- Play behavior
- Social hierarchies, dominance, and submission
- Arousal, stress, and fear
- Aggression
- Temperament testing
- Canine anatomy and scent perception
- Hands-On Activities: field work documenting live dog interactions to identify signals in greetings, play, and aggression

Phase 3 – How Dogs Think and Learn

Overview: This phase will summarize the basic science behind animal learning and how it affects behavior. We will take some fancy scientific terms and break them down into easy-to-understand concepts that are very effective for training dogs! Once you understand how dogs think and learn, you will know why certain solutions work and others will not. You will develop the skills to analyze a dog's situation and come up with your own creative solutions for training and behavior issues.

Duration and Credits: 3-5 Weeks, 3.00 Units

Highlights:

- Leadership
- Learning theory
- Four major training methods
- Use of “markers” such as praise or a clicker
- How to motivate dogs
- Classical and operant conditioning
- Discrimination, generalization, habituation
- Sensitization and desensitization
- Learning theory applied to real life scenarios
- Playing with humans: how it positively affects learning and communication
- Hands-On Activities such as training a classically conditioned response and how to use a simple play interaction as a reward or harmless punishment that teaches

Phase 4 – Hands-On Training: Behaviors & Skills

Overview: This phase will teach you how to develop serious training skills and how to make a plan for teaching a dog any behavior. You will be training simple and complex behaviors using reward-based training that is fun for both you and the dog.

You will gain a complete understanding of how to mark desired behaviors with great timing, how to position your body and hands, how to handle a leash, plus how to use many different types of rewards – all to get the maximum effect. You will also learn how to fade out rewards and gain reliable responses in many different situations (generalization). Finally, you will learn how to use professional training plans and follow a systematic method for teaching behaviors, from simple manners to advanced tricks and behavior chains such as those that are used in service dog training. You will also learn about the definition of *public access* – the biggest challenge for training a true service dog.

This phase is special because it marks the beginning of you developing serious training skills. You will work with at least one dog of your choosing that we will call your “student dog” for the remainder of the phase. By following the readings and video training demonstrations, you will learn how to teach your student dog all of the fundamental behaviors that would make up a Basic Manners class, plus several advanced behaviors and tricks. If you have elected to be paired with a Mentor Trainer, then as part of your phase exam at the completion of this phase, you will demonstrate your training results to your Mentor Trainer for evaluation and feedback.

Duration and Credits: 8-10 Weeks, 8.00 Units

Highlights:

Take a live dog through a professional basic training program using our renowned, easy-to-follow video course and study alongside a professional Mentor Trainer to gain invaluable feedback on your skills in personal evaluation sessions.

Behaviors to teach may include:

- Sit
- Watch
- Name/Attention
- Lie Down (Down)
- Stay
- Come/Recall
- Leave It
- Drop It

- Hand Targeting (Touch)
- Mat Training (Go to Place)
- Loose Leash Walking
- Advanced behaviors such as heeling, tricks, service dog tasks
- Your Mentor Trainer will evaluate your training skills
 - You will receive comprehensive feedback provided to you verbally and in writing
 - In this phase, your Phase Exam includes your Mentor Trainer's feedback

Phase 5 - Tools of the Trade – Equipment Makes a Difference

Overview: In this phase, you will learn about the diverse range of dog training tools currently available. Smart use of tools and equipment will help in managing behavior and achieving desired training results. You will learn how to make informed, effective, humane choices. It is also critical that you are able to understand those tools that you choose not to use. Your clients or adopters may suggest they want to use a tool which you believe is not the right choice. When this happens, you will need the skills to persuade them to make a better choice, without damaging your relationship as their trusted teacher. In this phase, you will learn those speaking skills in addition to the pros and cons of each tool.

Duration and Credits: 1-2 Weeks, 1.00 Unit

Highlights:

- Understanding training equipment - pros, cons, risks, rewards
- Choosing what's best for the dog and the owner
- Leash types
- Front clip and back clip harness
- Head halter
- Flat collar
- Martingale collar
- Aversive equipment – understanding it so you can explain why there are different/better options for clients
 - Prong/pinch collar
 - Slip/choke collar
 - Electronic training devices
- Products and toys
 - Mental stimulation
 - Chewing
- Games with toys - establishing rules that foster a great relationship
- Hands-On Activities such as fitting dogs to different types of equipment and learning to use it

Phase 6 – Learn How To Lead Your Own Group Classes

Overview: This phase focuses on speaking and leadership skills you will need when teaching group classes. Everything you need to be a great class leader will be covered, and graduates of our Master Class Program will receive customizable lesson plans for puppy, basic, and advanced classes. At the conclusion of this phase, when you are ready to present all of the new skills you have learned, you will set up an evaluation with your Mentor Trainer - an experienced professional in the field. Your Mentor Trainer will evaluate your training skills and your teaching performance, providing suggestions, guidance through demonstration, and constructive feedback. Sessions with your Program Director and Mentor Trainer will help you build on your strengths and continually improve. You will also have an opportunity to ask questions and discuss answers together. Having an experienced professional on your side is an invaluable resource that will continually take your skills to the next level.

Duration and Credits: 4-6 Weeks, 4.00 Units

Highlights:

- Speaking and leadership skills for group classes
- How to keep classes fun and interesting; training games
- How to set up your space for success
- How to present an exercise so it is easy for dog owners to learn
 - Learn and implement CATCH's proven "T-E-A-C-H-N" method
- How to design course materials (you can also customize the lesson plans we give you)
- How to handle difficult questions that arise in the group setting
- Safety in the classroom
- How to be seen as a respected professional
- Hands-On Activities such as practice teaching and selecting an ideal classroom space
- Your Mentor Trainer will evaluate your instructional teaching skills
 - You will receive comprehensive feedback provided to you verbally and in writing
 - In this phase, your Phase Exam includes your Mentor Trainer's feedback

Phase 7 - Behavior Problem Solving

Overview: This phase will focus on how to partner with your clients to help them manage, improve, or eliminate common dog behavior problems. You will learn to create and adapt a training plan with sound strategies that realistically fit the clients' abilities and lifestyle.

Duration and Credits: 4-6 Weeks, 4.00 Units

Highlights:

- Difference between management versus behavior modification
- Getting to the root of the problem - how to determine what to work on
- Barking
- Jumping
- Pulling on leash
- Leash reactivity/aggression
- House-training
- Resource guarding
- Kids and dogs
- Separation anxiety
- Fear
- Aggression
- Hands-On Activities such as practicing behavior case intakes and developing training plans

Phase 8 – Learn How To Lead Your Own Private Lessons

Overview: This phase will begin with a focus on the communication skills you need to be successful in one-on-one interactions with dog owners/clients. You will use everything you learned from the puppy development and training phases, plus the behavior problem solving phases, to lead great private lessons. "Privates" are a fantastic way to really get to know your clients and dogs, and make a meaningful difference in their lives! You will also learn how to turn private clients into group class clients, plus the other way around – getting your group class students excited to work with you in one-on-one private lessons. This is a key to building great relationships and a great business.

Duration and Credits: 4-6 Weeks, 4.00 Units

Highlights:

- The keys to every great private lesson
- How to take a history and effective notes
- Creating a training plan
 - Management
 - Behavior modification or training
- How to be highly effective in person or over video chat (which can expand your services)
- How to motivate your clients to partner with you in the training work
- Delivering difficult assessments of the dog or situation
- Safety: for you, the owner, the public
- When and how to refer a case
- Working successfully with families
- Understanding the modern dog owner: busy and influenced by television shows
- Hands-On Activities such as interviewing dog owners with the CATCH behavior problems survey
- Your Mentor Trainer will evaluate your ability to prepare and present a training plan for sample private lessons (based on common real-life cases)
 - You will receive comprehensive feedback provided to you verbally and in writing
 - In this phase, your Phase Exam includes your Mentor Trainer's feedback

Phase 9 – Shelter Internship: Hands-On Training, Behavior Evaluations, & Helping Dogs in Need

Overview: During this phase, you will gain invaluable experience working with dogs you have never met. Even if you already work at a shelter, you will gain new skills in handling, evaluating, understanding, and training the dogs. If you have spent minimal (or no) time in a shelter environment, this phase will prepare you to be more effective than ever with new dogs you've never met. A successful trainer has to get results with new dogs every day in group classes and private lessons, or other care services. Nothing can prepare you for this like an intensive study that guides you through hands-on fieldwork and training in a shelter. That's exactly what this phase is. You will also gain important people skills as you develop relationships with a shelter manager and ideally with your very first clients – the new owners of adopted dogs from the shelter in which you volunteer. This phase is a big win all around – for you, the shelter, and the dogs. It will be an extremely exciting and rewarding process!

Duration and Credits: 12-24 Weeks, 12.00 Units

Highlights:

- Understanding the dog shelter and rescue environment
- Evaluating dog body language and temperament
- Safety in the shelter
- Helping dogs who need it: walks, mental stimulation, training
- How to make shelter dogs more adoptable
- How to motivate and reward different types of dogs
- Teaching basic manners to shelter dogs
- What makes a successful dog adoption
- Hands-On Activities include behavior evaluation and training to make dogs more adoptable

Phase 10 - Launching Your Business and Career

Overview: CATCH Director/Founder David Muriello, CPDT, will share his experiences in building his training business from scratch to where it is today (13 locations across New York City). This phase will be dedicated to different aspects of starting your own business: planning, advertising, client relationship building, and your continuing education. It will also provide career building information for those who prefer to put their skills to work for organizations such as shelters, day care centers, or other national franchises that offer dog training – these are all excellent options for our graduates.

Duration and Credits: 4-6 Weeks, 4.00 Units

Highlights:

- Business building:
 - Developing your service suite
 - Budgeting (spend your operational and advertisement dollars wisely)
 - Marketing (advertising ideas and execution)
 - Website creation options
 - Planning your schedule
- Career development:
 - Identifying and finding the right job for you
 - Interviewing to impress
- Using the CATCH provided materials for your own business: lesson plans, course books/handouts
- Finding the right space for classes and puppy socialization groups
- Establishing relationships and partnering with daycare centers and/or veterinarians
- How to run an outstanding puppy socialization group (puppy play group!)
- How to become an AKC Canine Good Citizen evaluator
- Service offerings
 - Group classes: scheduling, rates, fee collection options
 - Private lessons: scheduling, rates, fee collection options, packages versus individual sessions
 - And more
- Growth plan and continuing education
- Access to our partnerships such as discounted business support from dog*biz or furthering your education with a Service Dog Coaching Certificate from Cooperative Paws

Final Assessment and Graduation

When you have completed all 10 phases of the Master Class program with passing grades, you will be ready for your Final Exam. The Final Exam will ask you to demonstrate your knowledge from all 10 sections of the curriculum to this point. When you pass the final exam, you will officially graduate with your Certification in Dog Training. You will receive a formal, professional graduation certificate that will look fantastic in your new business office, website, or in the front lobby of your new dog training job. Master Class graduates, we will also provide you with a CCTA Certified Dog Trainer seal that you can display on your website, email signature, resume, or business letterhead. Now it's time to launch your dream career or expand your current dog business. All graduates receive extensive Alumni Benefits, please see below for the highlights. We are here for you from application to graduation and beyond.

ALUMNI BENEFITS

- You will be featured on the CATCH website Trainer Search
 - This provides online referrals, credibility and direct links to your website or social media page. The links from our site are a huge boost to help you come up higher in natural search results (to have a site of our size and popularity point to your site or online presence is significant. This is called SEO or search engine optimization).
- Receive two forms of your Professional Certificate:
 - High-quality printed diploma suitable for framing, and a
 - Digital diploma ideal for display on your website (plus a digital seal to showcase the accomplishment of certification)
- Access to the CATCH Study Guide in both print and online format (available forever and updated regularly)
- You are automatically included on job post emails when pro training companies in your area come to us with opportunities for CATCH graduates.
- 15% off membership to the Association of Professional Dog Trainers with the CATCH promo code.
*This will also get you discounts on trainer's insurance through the Business Insurers of the Carolinas
- You will receive ready-made lesson plans and business/career-building prep tools
- Valuable discounts for CATCH students on products and services from top industry resources:
 - Dog*Biz – the number one company in the world at helping dog businesses succeed, offering everything from ready-made contracts and lesson plans to personalized consulting from the experts who have made it to the highest levels of our industry.
 - Your company's branding on dog and training products through Doggone Good
 - Featured author Nicole Wilde's books and videos.
 - Dogwise – outstanding educational books and videos for dog professionals
- Tuition discounts and preferred status with Cooperative Paws – a nationally renowned online school for studying service dog training with Veronica Sanchez
- Discounts on any additional CATCH program or upgrades you choose, including our in-person workshops that people come from all over the world to experience (we provide the dogs and the professional facilities)
- Advanced studies and consulting available with Nicole Wilde and Pia Silvani, two industry leaders.
- Online Pet CPR & First Aid certificate course provided to all Master Class and Basics Pro graduates
- Professional CATCH polo shirts and branded equipment such as training pouches and clickers are available to you for minimal purchase cost after graduation
- You are treated as a valued member of our community from application to graduation and forever after! Just ask students who have come back to us months and years later for networking, business consulting, or preparation for additional national certifications.

Evaluation

The entire Master Class curriculum is divided into 10 phases. There will be a formal evaluation at the end of each major section of your studies. Evaluation by exam is in the form of multiple choice and written questions, with in-person or phone evaluations by your Mentor Trainer or Program Director for selected topics (such as training or instructional skills). Students must pass all phases in order to graduate. *A score of 75 or higher is required to pass each phase and to ultimately receive certification or a graduation certificate.* In addition to the formal evaluations, there will be skill and knowledge building questions throughout the study material, and assignments through hands-on activities (fieldwork and training) that will cumulatively help in building the skills required of a Professional Dog Trainer. The final exam will encompass the entire course material and experience gained during the shelter volunteer work. The exam will be critically evaluated to gauge the competence of a candidate in being awarded a graduation certificate.

Grades are based on the examinations at the end of each phase and the comprehensive final exam.*** For phases that include Mentor Trainer evaluations, grades will also be based on the written feedback from your Mentor Trainer. The CATCH student's total course grade will be calculated based on the following:

Master Class: 1. Phase Exams (10): 6% each; 2. Mentor Evaluations (3): 10% each; 3. Final Exam: 10%.

Basics Pro: 1. Exams (10): 60% of total grade; 2. Mentor Eval.: 25%; 3. Final: 15%.

Core Skills: 1. Exams (7): 80% of total grade; 2. Final: 20%.

Student transcripts will reflect a final letter grade. Letter grades will be based on a percentage grading scale. Students graduating with a score of 96 or above shall be considered to "Graduate with Distinction" and this will be noted on their graduation certificate. The official grading scale is as follows:

Score	Grade	Performance Rating	Grade Point Average
90-100	A	Excellent	4.0
80-89	B	Good	3.0
70-79	C	Average *	2.0
60-69	F	Fail	1.0
NA	I	Incomplete**	NA

* A score of 75 is the minimum requirement to pass an exam, a phase, or any evaluation, and to ultimately receive a certificate and certification. Students scoring below passing may be eligible to retake an exam for a maximum of two retakes. Retakes of an evaluation by a Mentor Trainer must be granted via special permission, may incur a cost, and if granted a maximum of 1 re-take is permitted. A passing score on any retake must be achieved in order to be eligible to graduate any program. In case of a retake, the final grade for the phase, the exam, or the evaluation will reflect the average of the scores obtained in all attempts. Because CATCH is a private correspondence school and students are given retake opportunities to pass each exam if needed, there is no "readmission" opportunity if a student fails on all retake opportunities. For more details or questions on grading policies, you may always ask your Program Director.

** If incomplete work is not finished by the end of maximum course duration weeks, a final grade of "F" will be recorded.

*** For written questions, students must support their answers with sound reasoning and facts from their studies. Answers must fully demonstrate an understanding of pros and cons for the training decisions reflected in those answers. Failure to do so may result in a non-passing grade or a required re-take of an exam, a set of questions, or a particular question.

Student Resources

CATCH Academy's Guide to Becoming a Professional Dog Trainer, Online Student Center, plus Library of Books and Videos: Upon acceptance into the CATCH program, you will receive a binder that contains your invaluable CATCH Study Guide, plus a set of materials including some of the best training/behavior books and videos in the world. You will also receive immediate access to the Student Center online, which contains CATCH's custom videos, selected articles, and interactive questions. Your CATCH Guide, plus the books, videos, hands-on activity guides, training equipment, and interactive Student Center, will all make up your study materials. As you progress through each phase, you will receive your next set of study materials. After graduation, your books and guides will make up your professional library, a trusted go-to resource that you get to keep and use throughout your training career.

Website and Online Student Center: Students will create a personal username and password to login to our Student Center at www.CatchDogTrainers.com. Here you will find the digital version of your study guide, plus the videos, interactive questions, and articles that are part of the lessons in each phase. The study activities that are required for each phase will be listed in your CATCH Guide.

Student Support by Phone, Email, and Video Chat: Faculty “office” hours are the same as regular business hours. The Student Support team will be available to provide you with personal help over the phone, and via email and/or video chat. Whether it’s a question about your program schedule or a specific dog training study topic (Basics Pro and Master Class), we are your dedicated partners throughout your program - and beyond - and are always here to help you achieve success. With Basics Pro and Master Class, we offer Q&A sessions and specialty topic discussions with your Program Director. These will be discussions where you will get a chance to dialogue directly with, and learn from, top professionals in our field. You will share what you have been learning, receive feedback on your answers, and be challenged with new and interesting questions.

E-Mail Support: E-mail is another convenient way to reach Student Support. If you have questions about your studies or CATCH policies or procedures, ask for help by e-mailing:

studentsupport@CATCHdogtrainers.com

No matter how you choose to get in touch, we are here to assist you, 9am - 7pm ET including Saturdays.

STATE LICENSURE AND APPROVALS

CATCH Canine Trainers Academy (CATCH) is proud that our academy and program are recipients of State Licensure and a Certificate of Approval from the New Jersey Department of Labor and Workforce Development (NJLWD) and the New Jersey Department of Education (NJDOE). The CATCH Professional Dog Trainer courses are available to you across the United States and our headquarters are based in Little Falls, NJ.

The NJ Department of Education’s Bureau of Program Review evaluates and approves private correspondence schools. *Approval is a rigorous process with comprehensive requirements to meet a high standard for students.* An approval means that the NJLWD and NJDOE have determined and certified that CATCH Canine Trainers Academy meets the minimum standards for integrity, financial stability, and educational quality, including the offering of a bona fide instruction by qualified faculty and the appropriate assessment of students’ achievement prior to, during, and at the end of its programs. All approved education providers require annual reviews in order to maintain continued approval.

Student Records

All student records will be maintained by the school and will be available for review by the student at any time. It will be the responsibility of the students to provide updates for their records pertaining to address changes and contact information. All records are considered private and confidential. Student transcripts will be released to a third party only after the student signs a 'consent to release' form.

NON-DISCRIMINATION, GRIEVANCE PROCEDURE AND FAMILY EDUCATIONAL RIGHTS AND PRIVACY ACT

Non-Discrimination Policy

CATCH implements a strict code of non-discrimination in all its activities, inclusive of recruitments of students and employees and implementation of CATCH's programs and policies. Our non-discrimination code encompasses no discrimination based on race, color, creed, nationality, religion, ancestry, age, sex, sexual-orientation, marital status, and/or veteran status. Any form of sexual harassment is prohibited in any program or policy of CATCH and any such incidence will be immediately reported to the appropriate authorities and rightful action will be taken against the offender.

No discrimination is made based on non-disqualifying disability. Disclosure of an individual's disability is voluntary and any is kept under strict confidentiality and not shared with any third party. Disabled students that qualify for CATCH will be able to access all of CATCH's educational and vocational programs.

All policies, programs and activities of CATCH sub-serve to the following seven laws and regulations, within limitation:

1. The Americans with Disabilities Act of 1990 and the implementing regulations in 29 CFR Part 1630 (1992);
2. The Family Rights and Privacy Act of 1974 and the implementing regulations 34 CFR Part 99;
3. Title VI of the Civil Rights Act of 1964, as amended, and the implementing regulation 34 CFR Parts 100 and 101 (barring discrimination on the basis of race, color, or national origin);
4. Section 504 of the Rehabilitation Act of 1973 and the implementing regulations 34 CFR Part 104 (barring discrimination on the basis of physical handicap);
5. Title IX of the Education Amendments of 1972 and the implementing regulations 34 CFR, Part 105 (barring discrimination on the basis of sex);
6. The Age Discrimination Act of 1975 and the implementing regulations 45 CFR Part 90; and
7. The Family and Medical Leave Act of 1993.

Grievance Procedure

It is CATCH's belief that most grievances that students might have regarding instructional hours or internships can be amicably resolved through discussion. CATCH recommends a progressive step-by-step way of resolving any academic grievances.

- Inform your Mentor Trainer or Program Director about any problem you are facing during your coursework. Most grievances will be solved immediately.
- Grievances may be initially reported verbally, but must be followed up with a detailed written account of the issue, written by the student.
- For any unresolved grievances, or any grievances related to course content, educational material, or any other academic related matters contact one of our managers. Initial response time will be 24 hours or less.
- The management team will identify the reason for the grievance and resolve it ASAP and in some cases might request a discussion with the student to better understand the grievance before resolving it. In either case, it is CATCH's prime responsibility to adequately resolve all student grievances regarding academic matters within 7 days or less from the time the grievance is first reported in writing.

Family Educational Rights and Privacy Act

The Family Educational Rights and Privacy Act was legislated by the Congress in 1974 and is also known as the Buckley Amendment. CATCH formulates all its policies and programs keeping the guidelines in mind and your rights to confidentiality of your academic and financial records will be followed strictly in accordance with the aforementioned legislative guidelines.

Student Rights and Responsibilities

- Students will have continuous access to their learning materials and will receive an objective evaluation of their academic progress as they move through their coursework.
- Students have the right to quality education. This right includes, but not limited to appropriate instructors, instructional methodologies, content, practical expertise gained in the areas of instruction, availability of adequate resources or facilities to promote practical learning and an atmosphere conducive to personal and professional growth.
- Students enrolled in CATCH will not face any acts or threats of harassment, insult, physical aggression or intimidation. Any such incidents will be immediately reported to appropriate authorities and strict action will be taken against the offender. Your experience at CATCH will be in accordance with your worth and dignity and not against them.
- Any disciplinary processes that take place at CATCH will follow widely acceptable protocol that will encompass adequate notice and hearing from all parties involved before the disciplinary action is finalized.
- All students at CATCH are recommended to immediately report any cases of discrimination or injustice to the authorities at CATCH such that they can take appropriate remedial action. Reporting in a timely fashion is an important aspect for CATCH to be able to take appropriate steps in such cases and thus all students are encouraged to report any such incidents without any delay.
- CATCH will provide full disclosure of all fees and financial obligations to all enrolled students.
- Students are responsible to learn the academic content of the program they are enrolled in even if they have different reasoned exception and subjective opposing views on some content.
- In the event of an unannounced school closure, students enrolled at the time of the closure must contact the Department of Labor and Workforce Development's Training Evaluation Unit within ninety (90) calendar days of the closure. Failure to do so within the ninety (90) days may exclude the student from any available form of assistance. Please contact the Training Evaluation Unit via email at trainingevaluationunit@dol.nj.gov.
- Students are responsible for all content they submit to CATCH in for exams, evaluation, and the like. Any form of cheating or plagiarism is not acceptable for students, graduates, or members of any of our programs.
- Respect, sincerity, honesty, and integrity are four aspects which must come through in all conduct, communication, and relationships that enrolled students at CATCH have with the faculty, staff, co-students, and clients. This code of conduct applies to all interactions, whether in person, over the phone, or online, including social media and the like. Any breach of these principles may lead to suspension and/or termination from the program, at the sole discretion of CATCH, with or without warning. Similarly, status as a certificate holder can be revoked.
- Students are responsible for representing their credentials accurately to the public during their time as a student or after graduation from any CTA program. Misrepresenting credentials can lead to disqualification of these credentials and affiliation with the school.
- At CATCH, we are proud and excited to teach you dog-friendly, positive reinforcement training techniques. Students learn the LIMA (Least Invasive, Minimally Aversive) approach to training which is widely supported and recognized as an industry standard by the Association of Professional Dog Trainers, the International Association of Animal Behavior Consultants, and other leading organizations in our field. The American Veterinary Society of Animal Behavior further supports this humane dog training approach, stating "Evidence supports the use of reward based

methods for all canine training.” CATCH does not teach or support the use of techniques that employ pain or fear. Students can lose credit on exams or evaluations if proposing methods that are based on eliciting pain, fear, or the like.

- A demonstration of understanding the LIMA approach we teach will be an important factor in successfully completing schoolwork and also in representation after graduation. When permitted, we want all graduates to be able to use the CATCH name, seals, icons, or logos proudly in public display. The pride that comes with that must reflect in both directions: for the student, and for our school. If a graduate is using the CATCH name, seals, icons, or logos in any way, then it is not permitted to also display or use methods that go against the LIMA approach to training. We are dedicated to increasing the use of reward based training and enhancing the human-canine bond throughout the world. Therefore, if a graduate is not representing the humane approach that we teach, CATCH cannot support a graduate and all references to CATCH would need to be removed from any public display the graduate may have. While it is extremely rare, if such a situation were to arise, students or graduates are responsible for removing any reference of an endorsement by CATCH or any affiliation with CATCH.
- You have chosen CATCH Academy due to the excellent reputation of our programs and graduates. We value the professionalism of our industry and our community. The above policies are in place in order to maintain the integrity that is a benefit to you as a student and graduate. We thank you for being a part of upholding principles that will make us all proud to represent CATCH and pro dog training. Together we make our industry, our community, and our career paths stronger.

CATALOG DISCLAIMER

Please let us know if you have any questions, any time. The most recent version of the School Catalog is always publicly available for download on the CATCH website. CATCH reserves the sole right to modify/change the contents, practices, and policies outlined in this catalog at any time without prior notification. The School Director, Mr. David Muriello, or the CATCH Student Support Team can be directly contacted to obtain specific information regarding the current programs, policies, and important dates. The catalog is updated at least once each year, with a new edition coming out on January 1st. It is sometimes updated at other times during the school year. Subsequent versions are always labeled 2nd edition, 3rd edition, etc. All potentially interested and current students are encouraged to download a copy of the current catalog from the CATCH website or request a copy of the current catalog from the CATCH office by mail, email, or phone. In a case where a change may have been made to the catalog after enrollment: for any enrolled student, CATCH will provide the course elements as listed in the catalog at the time of the enrollment.

THANK YOU

We are glad to welcome YOU to the CATCH community of learning that will serve as the platform towards a deeper understanding of dogs and a fascinating and successful career path. Everyone on our team will be dedicated to helping you achieve your goal of becoming a successful Professional Dog Trainer.

We love hearing from you. Please contact our Student Support Team or the School Director, Mr. David Muriello, for any questions, clarifications or suggestions that you might have. Our goal is to provide you with an amazing education and an awesome experience. Everyone on the CATCH team thanks you for reading our program catalog and for entrusting us to shape your career by participating in our Professional Dog Trainer Courses.

We'll see you soon, training dogs!

